



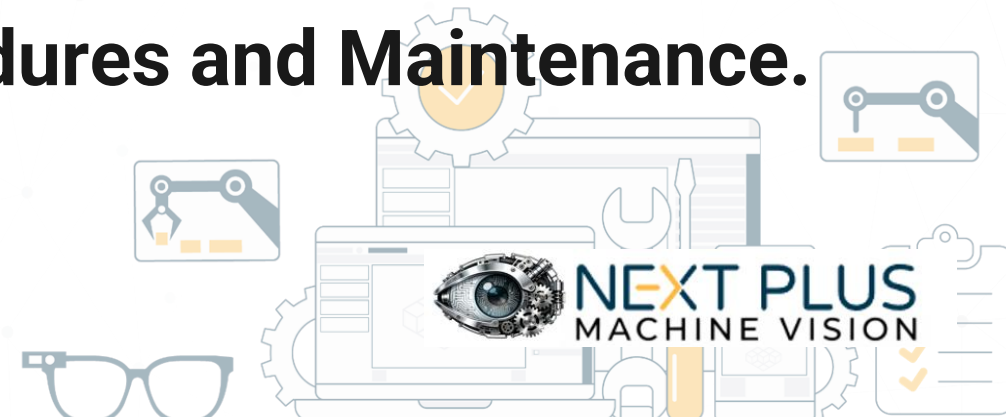
Next Plus Machine Vision is **MVP**

# Machine **V**ision **O**perations **A**I **P**latform

First No-Code Machine-vision AI based

Performance Support platform

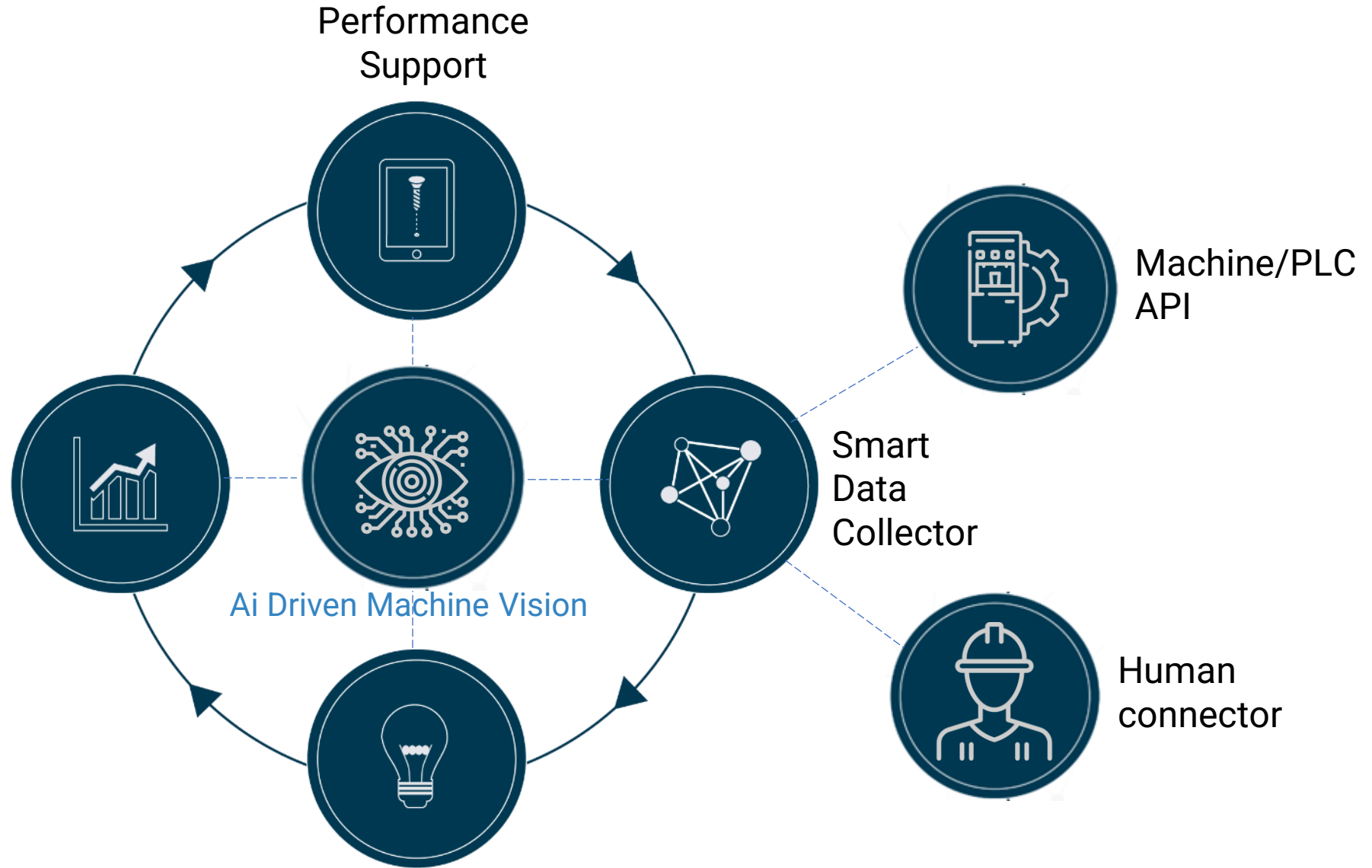
for Manufacturing, Assembling Procedures and Maintenance.



# MVP For

- Shopfloor
- Supply chain
- Infrastructure
- Maintenance
- Engineering
- Management

Process Improvement



Shop floor

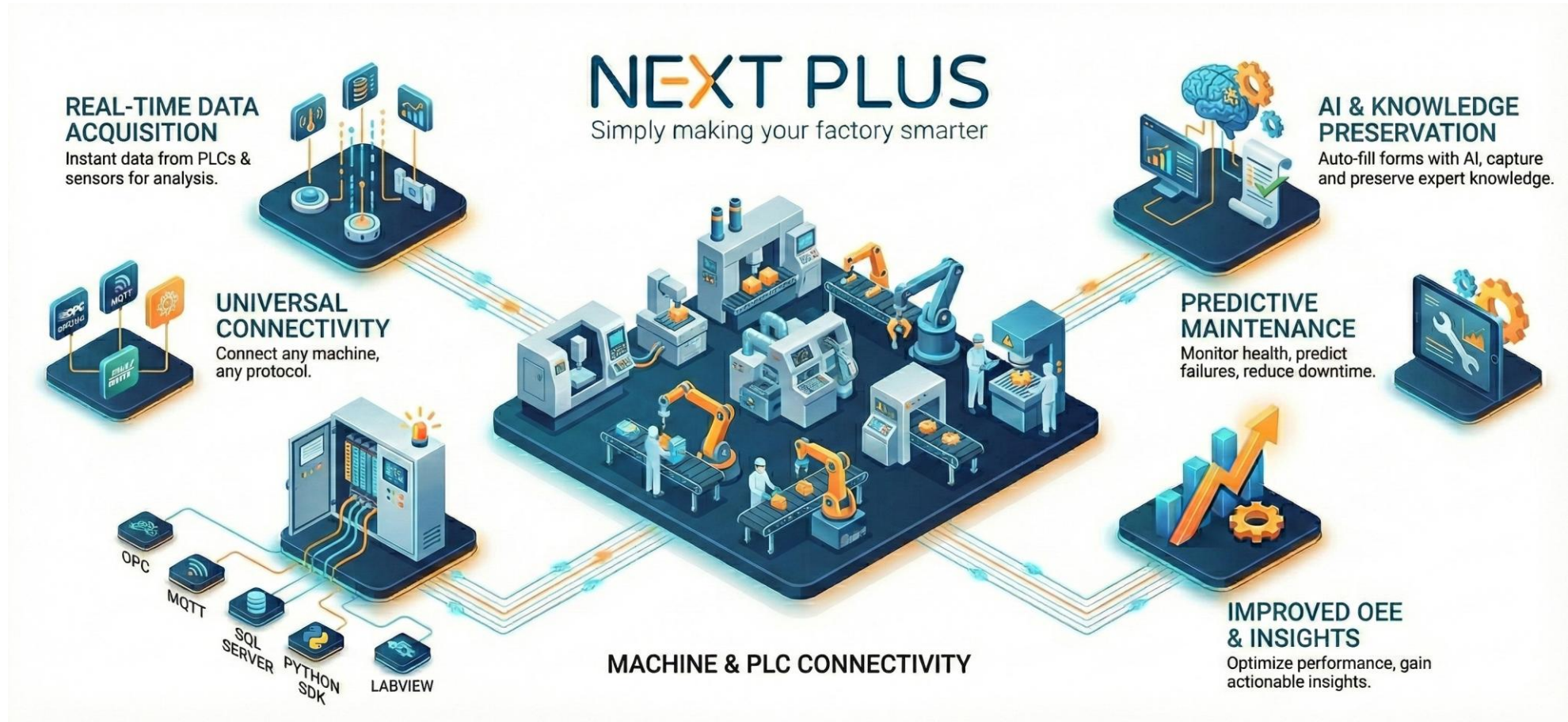
Management and engineering

Ai driven Machine vision





# Machine/PLC Data support

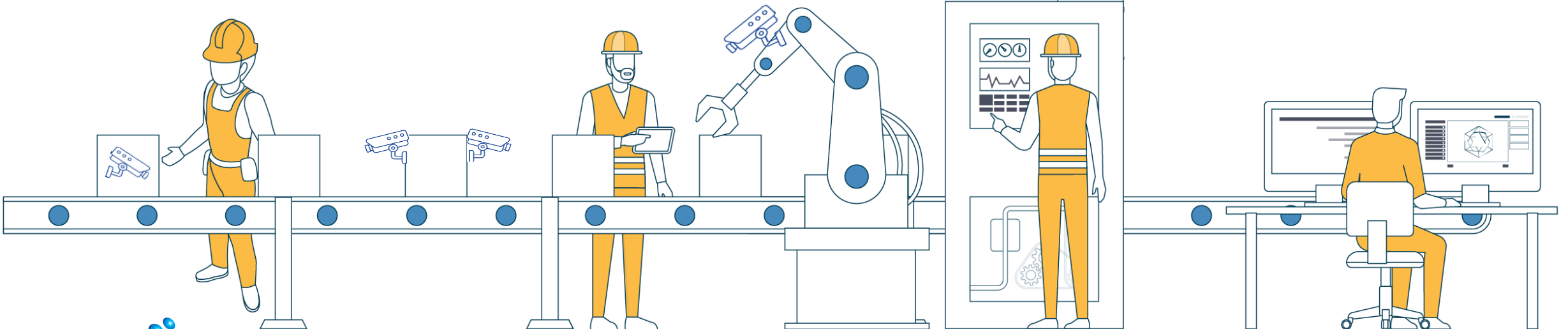
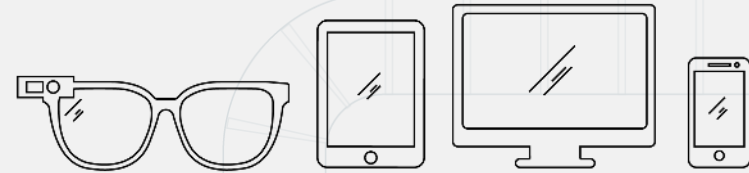




# Human Performance Support

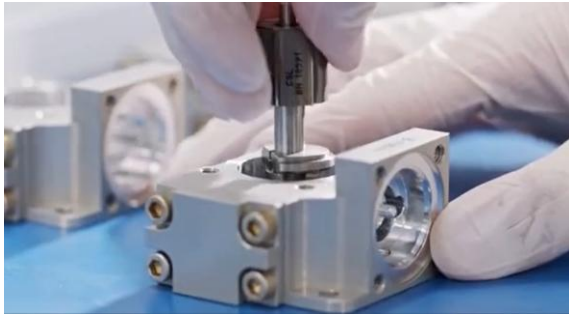
Next Plus MVP accompanies the employees in every step during **manufacturing, test, diagnosis and fault fixing** processes with the right SOP

Just in time knowledge platform agnostic:  
**PC, Tablet, mobile, Etc...**





# Performance Support with AI



Steps

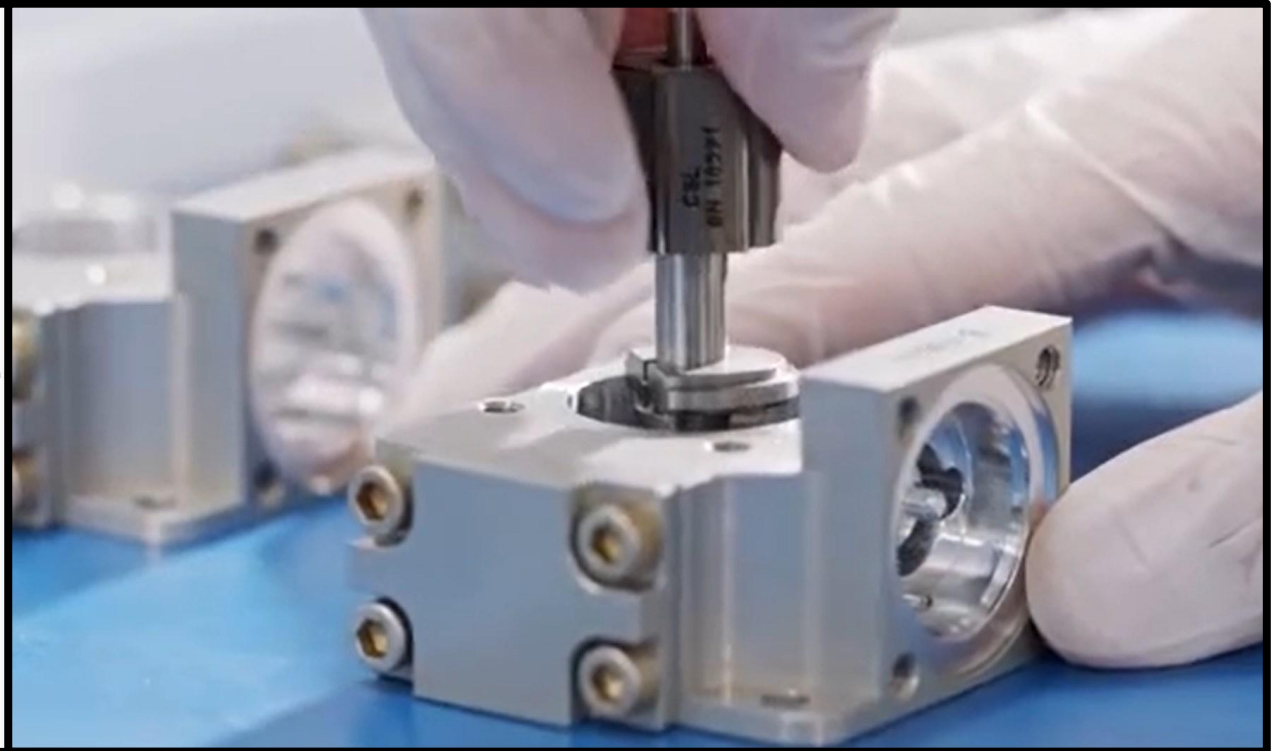
Tests

- 4. Installing the connector
- 5. led light
- 6. Installing the printed circuit board
- 7. Determining the printed circuit assembly  0 / 2

Tests 3 / 4

- 8. Visual inspection of the assembly
- 9. USB connection test
- 10. Tighten screws using an electric screwdriver
- 11. Checking a power switch

PU Station



Automatically create SOPs from a single video with AI!

**Saving ~80% of engineering time** on SOP and WI creation



# Procedure Magic Maker

## Workflow building

Import Steps

| Step name | Description                       | Media                          | Field name                               | Type       | Require |
|-----------|-----------------------------------|--------------------------------|--|------------|---------|
| 1         |                                   |                                |  |            |         |
| 2         | Gather Components and Tools       | Gather all required compon     | 8557780-85aa-11 Components Verified      | checkbox   | yes     |
| 3         |                                   |                                | Expiration Dates Checked                 | checkbox   | yes     |
| 4         | Install Mounting Base             | Secure the mounting base       | 85694d0-85aa-11 Base Alignment Verified  | checkbox   | yes     |
| 5         |                                   |                                | Fastening Torque                         | number     | no      |
| 6         | Connect Wires                     | Connect wires according to     | 85245b00-85aa-11 Wiring Diagram Followed | checkbox   | yes     |
| 7         |                                   |                                | Connection Security Verified             | checkbox   | yes     |
| 8         |                                   |                                | Wire Connection Notes                    | textarea   | no      |
| 9         | Install Circuit Board             | Carefully insert the circuit b | 854aa7b0-85aa-11 Board Properly Sealed   | checkbox   | yes     |
| 10        |                                   |                                | Board Secured                            | checkbox   | yes     |
| 11        | Test and Verify Connections       | Conduct basic testing using    | 857190a0-85aa-11 Continuity Test Passed  | checkbox   | yes     |
| 12        |                                   |                                | Voltage Level                            | number     | no      |
| 13        |                                   |                                | Test Results                             | textarea   | no      |
| 14        | Perform Final Inspection and Seal | Perform a final visual inspe   | 84fbc00-85aa-11 Visual Inspection Passed | checkbox   | yes     |
| 15        |                                   |                                | Assembly Sealed                          | checkbox   | yes     |
| 16        |                                   |                                | Inspector Name                           | text       | no      |
| 17        |                                   |                                | Inspection Date                          | datePicker | no      |

## Transcribe

Transcription

| Timestamp       | Text   |
|-----------------|--|
| 25:00:01:40.300 | Once you're ready you go back to your pan and you need to che...           |
| 26:00:01:45.000 | hit  |
| 27:00:01:46.800 | The way to see if it is done is to see that your oil is actually really... |
| 28:00:01:50.000 | It's like water and not very oily.   |
| 29:00:01:51.200 | Well, it was a bit more.   |
| 30:00:01:54.200 | Because this is an electric stove, it takes a bit more time.               |
| 31:00:01:57.600 | On the time, I can scramble some more because I want the fat to...         |
| 32:00:01:59.000 | Okay, I think we're ready.   |
| 33:00:02:01.600 | So we're taking the scrambled egg and we put it inside the cal...          |
| 34:00:02:03.400 | As you can see, it was not hot enough, but we'll work with what w...       |
| 35:00:02:05.800 | And we wait for the egg to start to get hard.                              |
| 36:00:02:08.500 | Don't worry about the amount of oil around the egg.                        |

## Copy text / procedure

Electrical Assembly Work Instructions

These instructions outline the process for the assembly of electrical components. Please follow these steps carefully.

**Step 1: Component Preparation**

Gather all required components and tools as listed in the bill of materials. Ensure all components are in good condition and within their expiration dates.

## Split to segments

| Name                                   | Start        | End          | Preview |
|--|--------------|--------------|---------|
| Gather Necessary Tools and Ingredients | 00:00:05.480 | 00:00:27.080 | Preview |
| Preheat the Pan                        | 00:00:37.080 | 00:01:05.720 | Preview |
| Scramble the Egg                       | 00:01:09.720 | 00:01:28.712 | Preview |
| Cook the Egg                           | 00:01:34.612 | 00:02:06.480 | Preview |
| Spring Seasoning                       | 00:02:11.000 | 00:02:24.800 | Preview |

## Paste Procedure (Import)

Import Steps

Base Installation secure the mounting base to the work surface. Ensure it is properly aligned and fastened.

Step 2: Mounting

## Tools selecting

Tool Attachment

| Name                 | Description | Serial        |
|----------------------|-------------|---------------|
| Electric Screwdriver |             | Serial Number |



# Data Collection

Next Plus MVP asks the relevant questions, requests input, connects to sensors

(IoT) & systems, and automatically adjusts the process

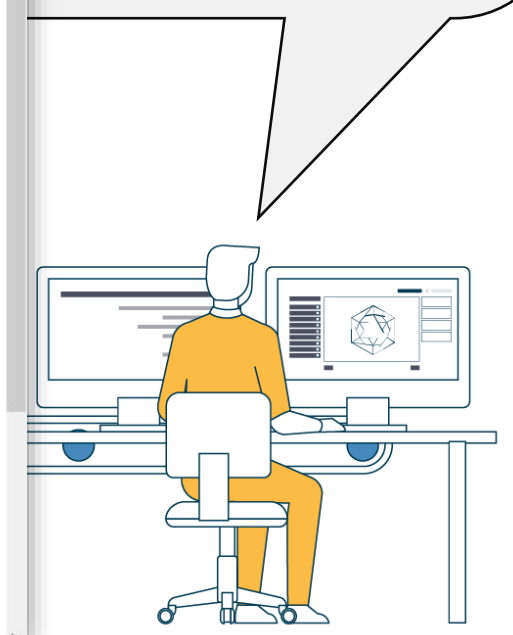
**Actions**

- 4. Tighten the Relay Bracket screws
- 5. Insert the relay into the bracket
- 6. Connect the Relay
- 7. Tighten the Relay screws
- 8. Position the Pedestal
- 9. Insert the Pedestal
- 10. Tighten the Pedestal screws

**Description**  
Tighten the two allen screws, discs and spring discs

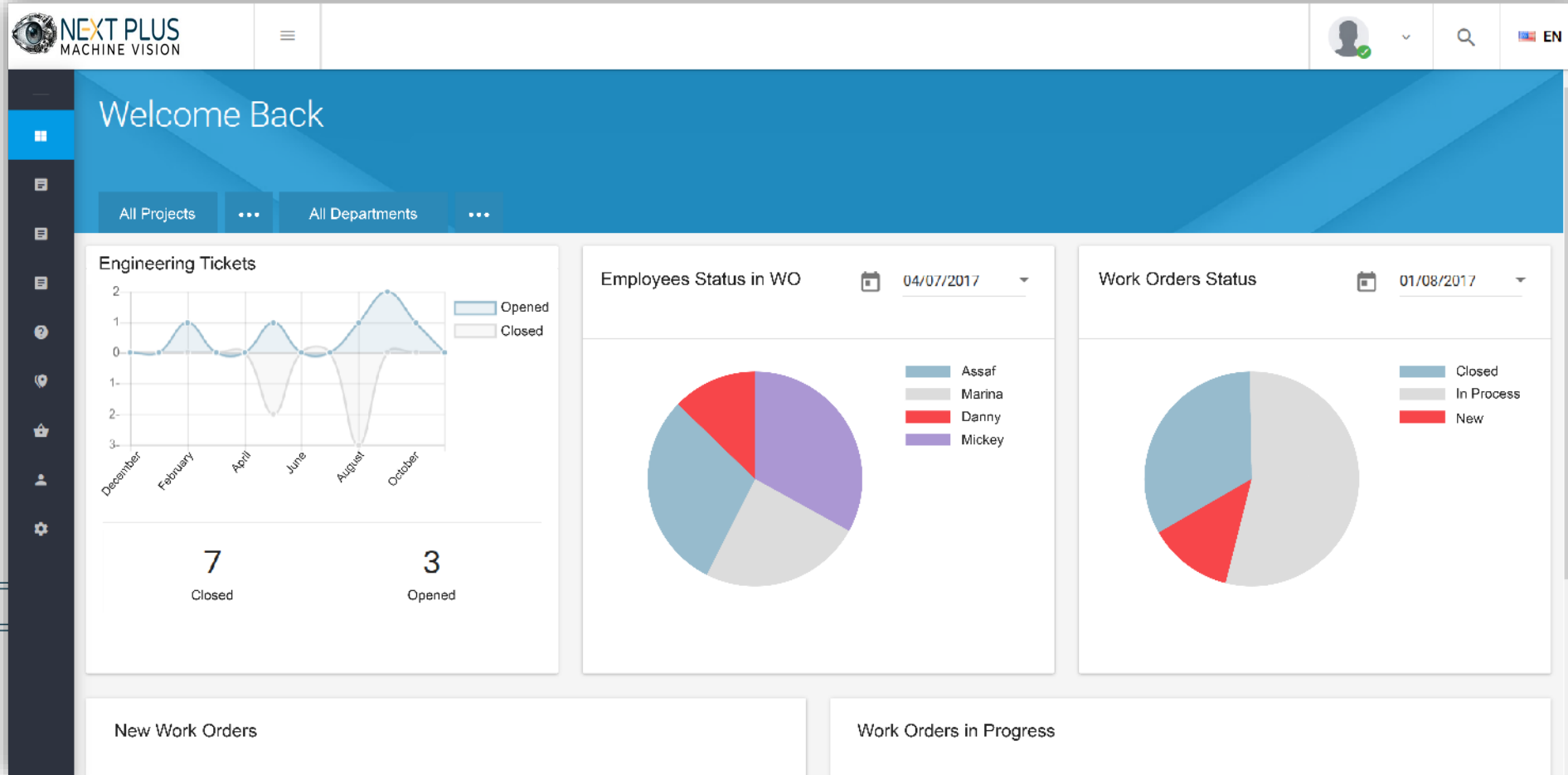
**Tools**  
Allen key 3/32"

**Fields**  
Tourque:





# Actionable Insights

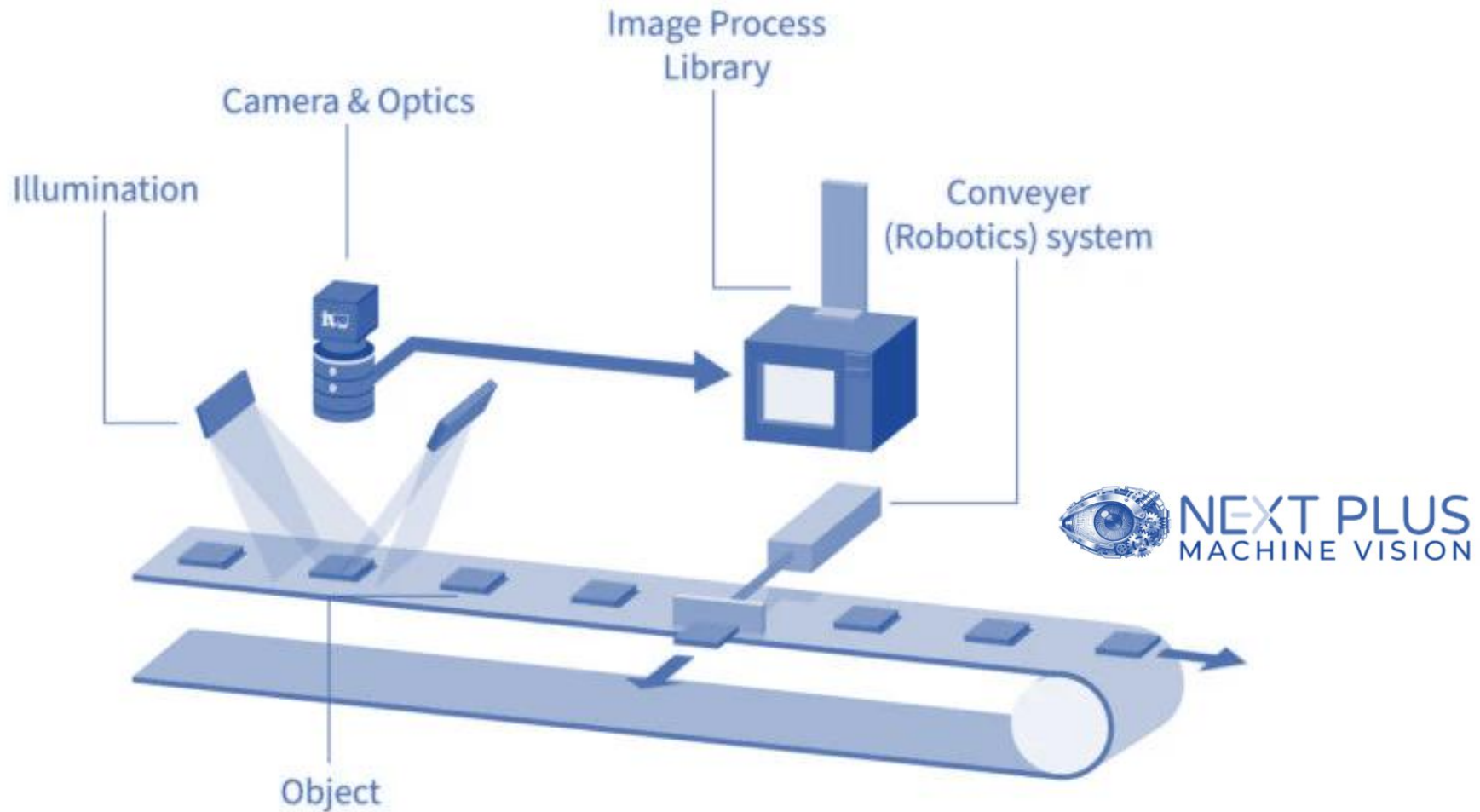


VP digests all the data collected and provides actionable insights about quality, personnel, and much more, using chatbots for maximum simplicity.





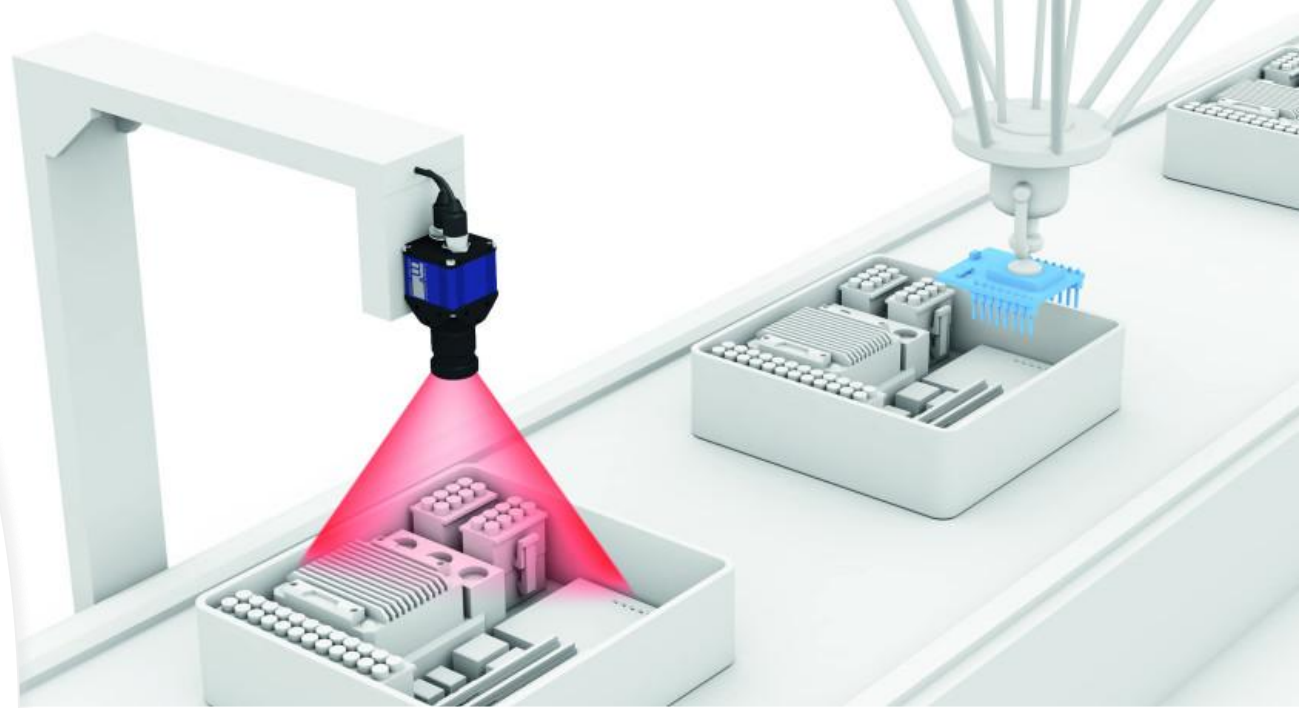
# Ai Driven Machine Vision





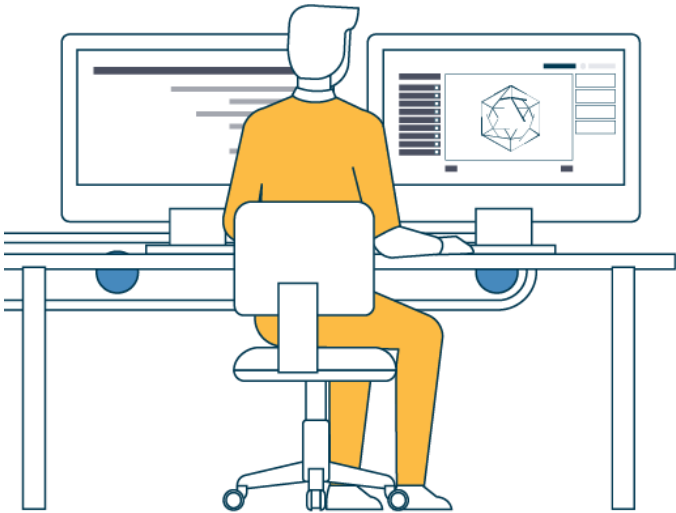
# Machine Vision applications

- 3D weld inspection
- Assembly parts presence/absence inspection
- AI-based learning systems
- Integration of Vision system with robotics and automation
- Ammunition quality inspection
- Non-destructive testing in the thermal domain (such as composite material inspection)
- Production process anomaly detection
- Surface quality inspections
- Blade quality inspection

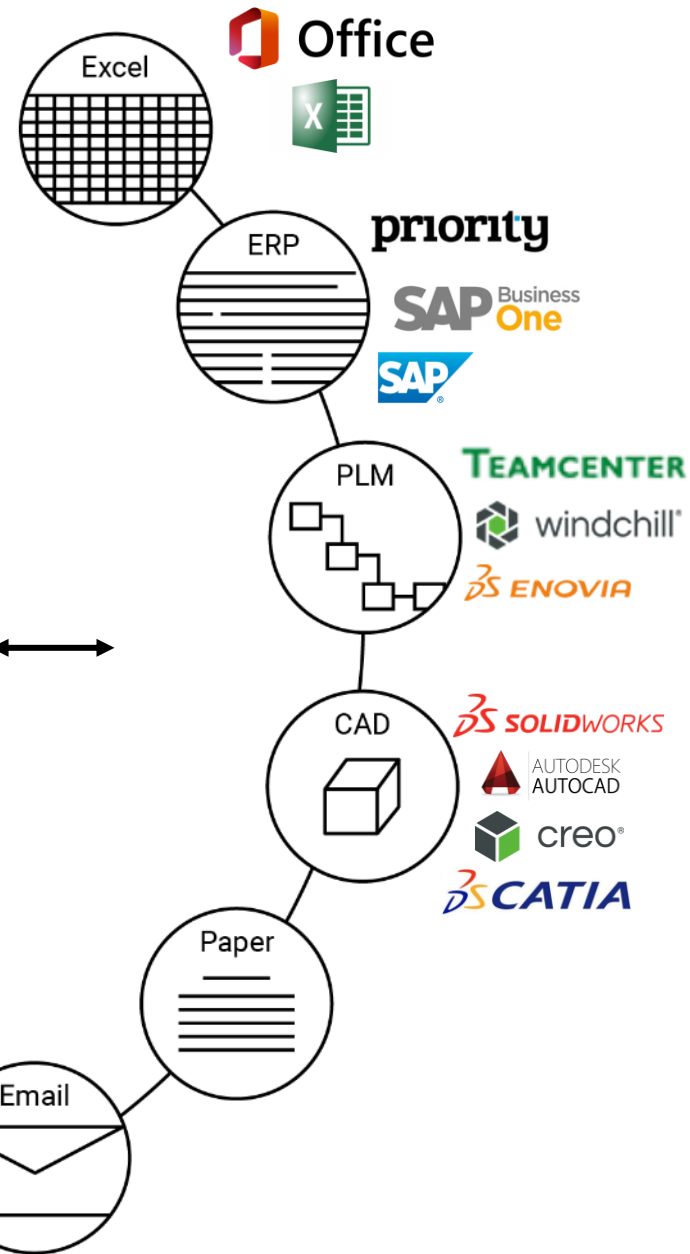




# Software Interface



**NEXT PLUS**  
MACHINE VISION

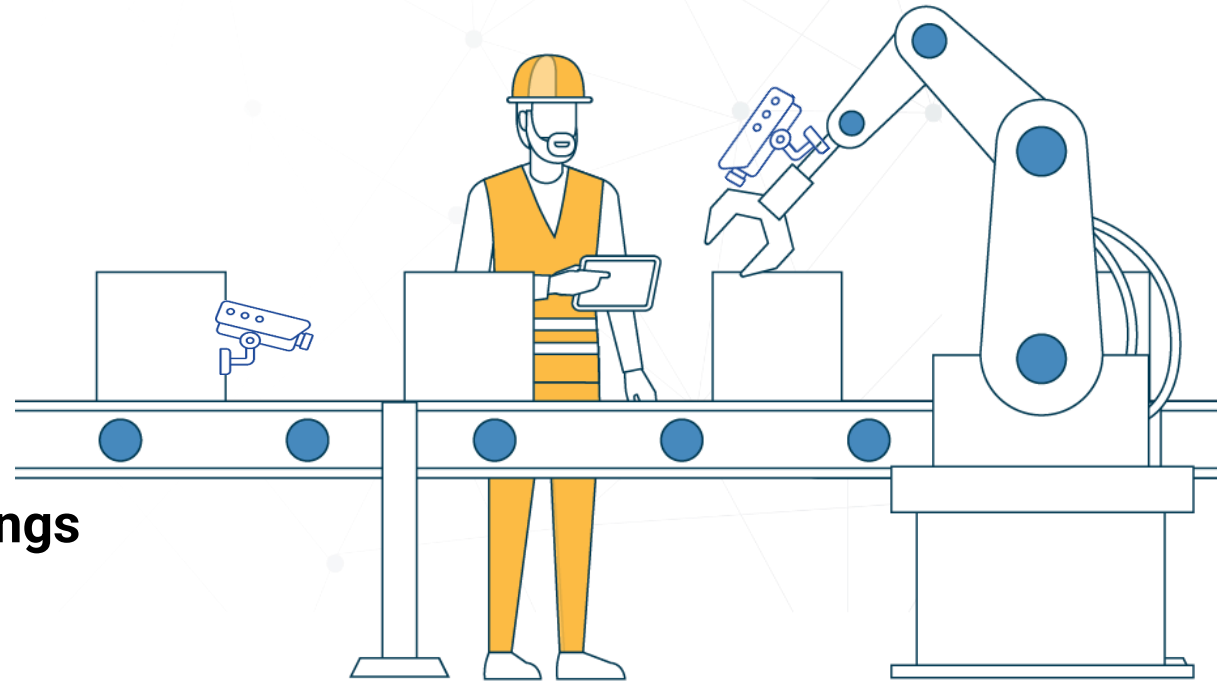


External connectivity to ERP, PLM, PLCs and other systems is a breeze with our **well documented API, drag & drop webhooks, Python SDK, Labview connector, OPC connector**, and additional connectivity options

Connecting your personnel  
seamlessly to the Industrial IoT

## Actual Industry 4.0

\*We call this the HIoT – **Human Internet of Things**



# Why customers choose Next Plus Machine Vision



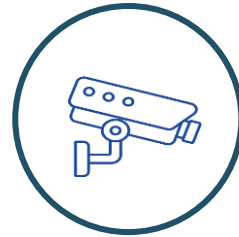
Operational and  
training  
cost reduction



Quality  
improvement  
and regulation



Less  
operational  
down  
time and  
setup time



Built-in  
Integrated  
AI driven  
Cameras



Real time  
process  
control



Extremely  
fast  
System  
deployment



Knowledge  
preservation

# Additional Features and Benefits



Step completion verification with vision AI



Integrated BI functionalities for the end user to create widgets autonomously



AI analytics with all-data integrated agent



FDA CFR21 Part 11 Compliant and validated



Exact time logging for ease reporting and costing



Fully cross-platform: PC, Table, Phone, Smart glasses



ERP Connectivity with SAP, Priority ERP, Oracle and others

# Cross organizational adoption

Production line personnel  
Work orders Execution



Field and floor technicians  
Machine setup and maintenance



All levels of management  
BI and actionable insights



Engineering  
Content conversion, creation and maintenance



Quality  
Quality assurance actionable data collection and guidance



*matrix* 



**NEXT PLUS**  
MACHINE VISION